



Barry Blandford Way, London, E3

BUTLER & STAG



Guide Price - £300,000 to £350,000
Welcome to a stunning oasis of contemporary living nestled in the vibrant heart of Bow. This beautifully well-kept, modern one-bedroom apartment offers an unparalleled blend of style, comfort, and convenience, making it the perfect retreat for singles or couples seeking an elegant urban lifestyle.



Leasehold

- One Bed Apartment
- Close to Devons Road DLR
- Close To Amenities
- Private Balcony
- Well Presented Throughout
- Presented Beautifully Throughout

Situated in the desirable Bow area, this apartment benefits from excellent connectivity. The proximity to Devons Road DLR station ensures swift access to Canary Wharf, Stratford, and the City, making it ideal for professionals. Additionally, the vibrant local scene, with its eclectic mix of cafes, bars, and restaurants, adds a layer of cultural richness to the living experience.

Step inside to discover an impeccably maintained space where modern design meets homely charm. The open-plan living area is bathed in natural light, thanks to large, strategically placed windows. The sleek, contemporary kitchen boasts high-end appliances and ample storage, perfect for culinary enthusiasts.

The generously sized bedroom is a haven of tranquility. It features plush carpeting, built-in wardrobes, and large windows that invite in plenty of natural light while offering serene views of the surrounding area. This space is thoughtfully designed to provide both comfort and functionality, ensuring a restful night's sleep.

The modern bathroom is a sanctuary of relaxation, featuring a pristine white suite, contemporary tiling, and high-quality fixtures. It offers both a bathtub and a shower, catering to all your relaxation needs.

This beautifully well-kept modern one-bedroom apartment in Bow is a rare find that perfectly balances style, comfort, and convenience. With its prime location close to Devons Road DLR, impeccable interiors, and excellent amenities, it presents an exceptional opportunity for those seeking a sophisticated urban living experience. Don't miss the chance to make this elegant apartment your new home.

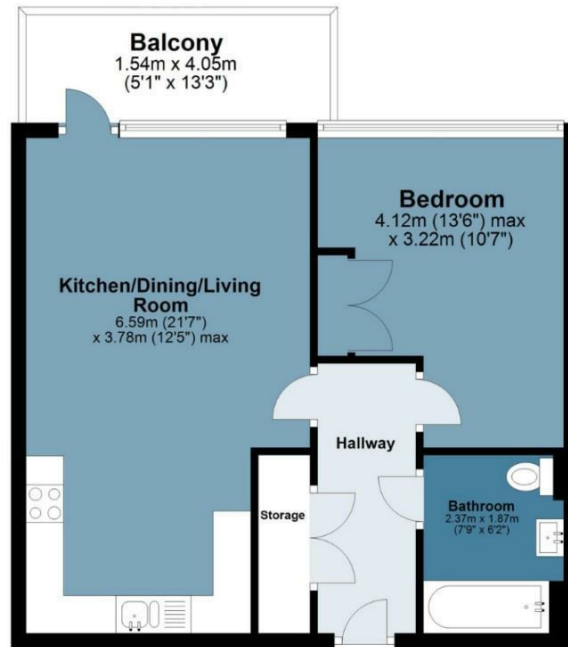




Hoey Court

Approx. Gross Internal Area 50.1 sq. metres (540 sq. feet)

BUTLER & STAG



Measurements are approximate and for illustration purposes only. While we do not doubt the accuracy and completeness, we advise you conduct a careful independent assessment of the property to determine monetary value
© @modephoto.uk www.modephoto.co.uk

BUTLER & STAG

☎ 020 8102 1236

🏠 508 Roman Road, Bow, London, E3 5LU

✉ bow@butlerandstag.com

www.butlerandstag.uk

IMPORTANT NOTICE - These particulars have been prepared in good faith and they are not intended to constitute part of an offer or contract. We have not performed a structural survey on this property and the services, appliances and specific fittings have not been tested. All photographs, measurements, floor plans and distances referred to are given as a guide and should not be relied upon.